

United States Department of the Interior
National Park Service
National Register of Historic Places
Registration Form

This form is for use in nominating or requesting determination for individual properties and districts. See instruction in How to Complete the National Register of Historic Places Registration Form (National Register Bulletin 16A). Complete each item by marking "x" in the appropriate box or by entering the information requested. If an item does not apply to the property being documented, enter "N/A" for "not applicable." For functions, architectural classification, materials and areas of significance, enter only categories and subcategories from the instructions. Place additional entries and narrative items on continuation sheets (NPS Form 10-900a). Use a typewriter, word processor, or computer, to complete all items.

1. Name of Property

historic name Mathews House

other names/site number Mathews/Berg House; 5DT.1533

2. Location

street & number 40647 Matthews Lane [N/A] not for publication

city or town Paonia [N/A] vicinity

state Colorado code CO county Delta code 029 zip code 81428

3. State/Federal Agency Certification

As the designated authority under the National Historic Preservation Act, as amended, I hereby certify that this [X] nomination [] request for determination of eligibility meets the documentation standards for registering properties in the National Register of Historic Places and meets the procedural and professional requirements set forth in 36 CFR Part 60. In my opinion, the property [X] meets [] does not meet the National Register criteria. I recommend that this property be considered significant [] nationally [] statewide [X] locally. ([] See continuation sheet for additional comments.)

Signature of certifying official/Title Office of Archaeology and Historic Preservation, Colorado Historical Society
Date State or Federal agency and bureau

In my opinion, the property [] meets [] does not meet the National Register criteria. ([] See continuation sheet for additional comments.)

Signature of certifying official/Title Date
State or Federal agency and bureau

4. National Park Service Certification

I hereby certify that the property is: Signature of the Keeper Date of Action
[] entered in the National Register [] See continuation sheet.
[] determined eligible for the National Register [] See continuation sheet.
[] determined not eligible for the National Register.
[] removed from the National Register
[] other, explain [] See continuation sheet.

Mathews House
Name of Property

Delta County/ Colorado
County/State

5. Classification

Ownership of Property

(Check as many boxes as apply)

- private
- public-local
- public-State
- public-Federal

Category of Property

(Check only one box)

- building(s)
- district
- site
- structure
- object

Number of Resources within Property

(Do not count previously listed resources.)

Contributing

Noncontributing

5	1	buildings
0	0	sites
0	0	structures
0	0	objects
5	1	Total

Name of related multiple property listing.

(Enter "N/A" if property is not part of a multiple property listing.)

N/A

Number of contributing resources previously listed in the National Register.

0

6. Function or Use

Historic Function

(Enter categories from instructions)

DOMESTIC/ single dwelling

AGRICULTURAL/ barn

Current Functions

(Enter categories from instructions)

DOMESTIC/ single dwelling

7. Description

Architectural Classification

(Enter categories from instructions)

LATE VICTORIAN/ Queen Anne

Materials

(Enter categories from instructions)

foundation STONE

walls BRICK

roof WOOD

other _____

Narrative Description

(Describe the historic and current condition of the property on one or more continuation sheets.)

Mathews House
Name of Property

Delta County/ Colorado
County/State

8. Statement of Significance

Applicable National Register Criteria

(Mark "x" in one or more boxes for the criteria qualifying the property for National Register listing.)

- A** Property is associated with events that have made a significant contribution to the broad patterns of our history.
- B** Property is associated with the lives of persons significant in our past.
- C** Property embodies the distinctive characteristics of a type, period, or method of construction or represents the work of a master, or possesses high artistic values, or represents a significant and distinguishable entity whose components lack individual distinction.
- D** Property has yielded, or is likely to yield, information important in prehistory or history.

Criteria Considerations

(Mark "x" in all the boxes that apply.)

Property is:

- A** owned by a religious institution or used for religious purposes.
- B** removed from its original location.
- C** a birthplace or grave.
- D** a cemetery.
- E** a reconstructed building, object, or structure.
- F** a commemorative property.
- G** less than 50 years of age or achieved significance within the past 50 years.

Narrative Statement of Significance

(Explain the significance of the property on one or more continuation sheets.)

9. Major Bibliographical References

Bibliography

(Cite the books, articles and other sources used in preparing this form on one or more continuation sheets.)

Previous documentation on file (NPS):

- preliminary determination of individual listing (36 CFR 67) has been requested
- previously listed in the National Register
- previously determined eligible by the National Register
- designated a National Historic Landmark
- recorded by Historic American Buildings Survey

- recorded by Historic American Engineering Record

Areas of Significance

(Enter categories from instructions)

ARCHITECTURE

Periods of Significance

1901

1904

Significant Dates

1901

1904

Significant Person(s)

(Complete if Criterion B is marked above).

N/A

Cultural Affiliation

N/A

Architect/Builder

UNKNOWN

Primary location of additional data:

- State Historic Preservation Office
- Other State Agency
- Federal Agency
- Local Government
- University
- Other

Name of repository:

Colorado Historical Society

Mathews House
Name of Property

Delta County/ Colorado
County/State

10. Geographical Data

Acreage of Property less than one

UTM References

(Place additional UTM references on a continuation sheet.)

1. 13 274301 4304797
Zone Easting Northing

2. Zone Easting Northing

3. Zone Easting Northing

4. Zone Easting Northing

[] See continuation sheet

Verbal Boundary Description

(Describe the boundaries of the property on a continuation sheet.)

Boundary Justification

(Explain why the boundaries were selected on a continuation sheet.)

11. Form Prepared By

name/title Paul Thliveris (Edited- C. Geddes, staff)

organization _____ date May 20, 2004

street & number P.O. Box 1700 telephone (970) 527-3289

city or town Paonia state CO zip code 81428

Additional Documentation

Submit the following items with the completed form:

Continuation Sheets

Maps

A **USGS map** (7.5 or 15 minute series) indicating the property's location.

A **Sketch map** for historic districts and properties having large acreage or numerous resources.

Photographs

Representative **black and white photographs** of the property.

Additional Items

(Check with the SHPO or FPO for any additional items)

Property Owner

(Complete this item at the request of SHPO or FPO.)

name Andrew Thliveris

street & number 22 Stonecrest Circle telephone (608) 829-1567

city or town Madison state WI zip code 53717

Paperwork Reduction Act Statement: This information is being collected for applications to the National Register of Historic Places to nominate properties for listing or determine eligibility for listing, to list properties, and to amend existing listings. Response to this request is required to obtain a benefit in accordance with the National Historic Preservation Act, as amended (16 U.S.C. 470 *et seq.*)

Estimated Burden Statement: Public reporting burden for this form is estimated to average 18.1 hours per response including time for reviewing instructions, gathering and maintaining data, and completing and reviewing the form. Direct comments regarding this burden estimate or any aspect of this form to the Chief, Administrative Services Division, National Park Service, P.O. Box 37127, Washington, DC 20013-7127; and the Office of Management and Budget, Paperwork Reductions Projects (1024-0018), Washington, DC 20503.

**National Register of Historic Places
Continuation Sheet****United States Department of the Interior
National Park Service**Mathews House
Delta County/ ColoradoSection number 7 Page 1**DESCRIPTION**

The Mathews House includes a Queen Anne brick and sandstone house, large barn, outhouse, caretaker's cottage, shop, and hobby room. The main house sits at the northwest corner of Niagara Street and Mathews Lane, facing east onto Mathews Lane. Though two stories from the street view, the slope of the land disguises the below grade level on the rear, revealing three stories. Short stone pillars stand in front of an arched arbor at the street entry. A wrought iron gate provides access to a slender flagstone walkway, leading up to the porch and main entrance to the house. The property is completely surrounded by acres of fruit orchards, including a beautiful variety of 100+-year-old trees, shrubs, and gardens. To the southwest of the house lie the barn and outbuildings.

HOUSE (1897-1901)

The two-story house has an irregular plan set upon a sandstone foundation. Walls consist of a reddish brick. Wood shingles cover the cross-gabled roof and gable peaks are topped with finials. All double-hung single-pane windows are original. On the east side, a flagstone walkway from the street leads to three wooden steps, taking one up to a polygonal porch, which shelters the main entry to the house. A conical roof turret with flared eaves tops the porch, which sits in the "L" at the junction of the north and east wings. A flagpole projects from the top of the turret. Decorative elements on the porch include chamfered and turned posts, spindled wood balusters, and cut-out brackets. The porch protects a paneled and beautifully designed front door and sidelight. The front door possesses elements such as angled slits, carved rosettes, and inset panels, and glass panels (etched at one time). The front door and window are supported by large hand carved sandstone blocks with beveled edges. On the east façade wall, to the left of the front porch, is a large picture window with a stone lintel and sill. Outlines of the location of two original windows can be seen where the brickwork mortar is lighter. Stone lintels and sills were taken from these two individual windows in 1944 to make one large lintel and sill for the picture window centered on the first floor façade. Directly above this picture window is a three-part window, with the center window slightly larger than those on either side. The hood mold lintels and continuous sill are beveled sandstone; the sill of the three windows is carved into a "rope" pattern. Above the three windows is the gable roof peak with vergeboard and gable ornamentation. Gabled returns complete the façade view.

On the north elevation there is a single fixed pane window towards the east with the same stone hood mold lintel and sill seen on other windows throughout the house. Towards the center of this wall is a two-story projecting gabled bay. The main level of the projecting bay has three original 1/1 single-pane double-hung windows with a sandstone course directly above and below the windows, incorporated into the sills and lintels. Just above the lintel stone course on the two outer portions of the bay projection are ocular single-pane fixed windows enclosed in sandstone. At the same level as the ocular windows, but in the central section of the projecting bay is an arched stone that reads "A.D. 1901," which signifies the completion date of the residence. The base of the stone has a carved rope design. The gable face displays decorative fishscale shingles, cut-out gable ornamentation with pendants, and curved brackets with beads. Between the three sets of brackets are smaller modillions in a design similar to the larger brackets. Centered in the gable face is a set of paired fixed single-pane windows surrounded by decorative wood trim. Directly to the west (right) of the gabled projection are three wooden steps leading up to the large porch that wraps around the north, west and south sides of the house. The decorative porch brackets give an arched appearance between the chamfered and turned posts. A wood spindle balustrade runs the length of the entire porch. The posts, brackets, and balustrade are identical to the ones on the front porch. The porch shelters a single 12-light French door flanked by small fixed single-pane windows with stone lintels and sills. Directly below the main level is a storage area covered with lattice.

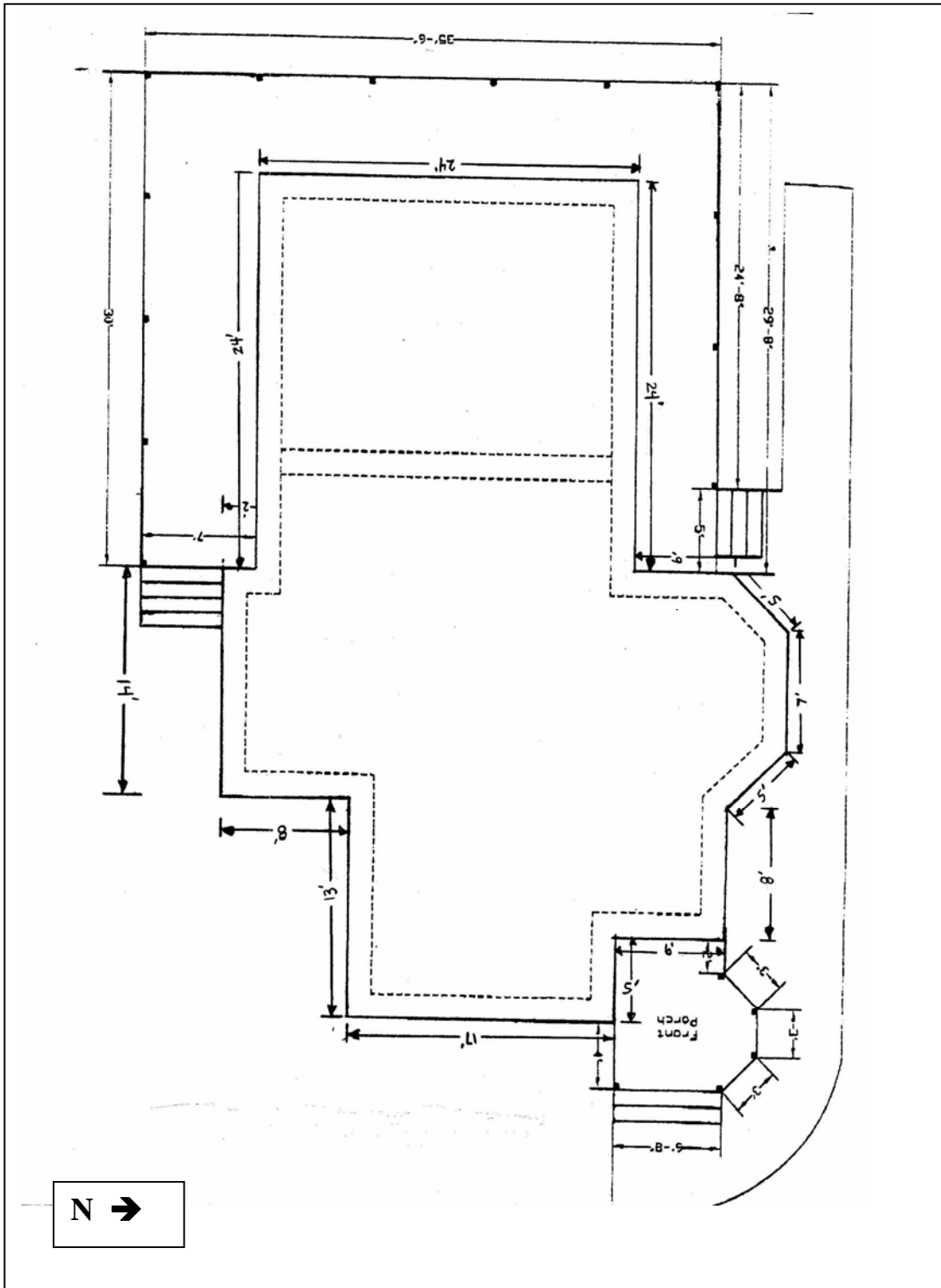
National Register of Historic Places Continuation Sheet

United States Department of the Interior
National Park Service

Mathews House
Delta County/ Colorado

Section number 7 Page 2

Main House Floor Plan



**National Register of Historic Places
Continuation Sheet****United States Department of the Interior
National Park Service**Mathews House
Delta County/ ColoradoSection number 7 Page 3

The west elevation (rear) exposes all three stories of the house. The bottom, or basement, level has a wall face of 12"X 16" sandstone block. A decorative wood and glass panel door (glass is in the upper two panels, the two lower wood panels are embellished with carved slits.) is centrally placed with a double-hung single-pane window to the left and a small fixed single-pane window to the right. This lower level is covered and protects as well as provides ample storage space on the north and south walls of the home. A simple wood door encloses the space on the south side. Large square posts maintain stability to the building above and support the porch. The main level (2nd level on the rear) continues the wrap-around porch that begins on the north side of the home. This main level has a single off-center 12-light French door and fixed single-pane window to the north (left). The top story (3rd level from on the rear) has a small balcony roughly 1/3 the size of the porch below and set to the south side. The two side walls are vertical wood siding while the face (west) has two larger support posts with a wood spindle balustrade. A wood-paneled door (similar to the basement level door) with segmental arch allows entry/exit to the porch. A 1/1 double-hung single-pane segmental arch window stands to the north (left) of the door. Gable returns frame the upper level.

The south elevation has lattice covering the below grade storage area, similar to the north side of the house. The main level covered porch continues along this side and terminates at the center of the wall where a cross gable section of the house projects to the south. The decorative brackets, chamfered and turned posts, and balustrade are maintained along this side. The porch shelters two windows. The one on the left is an original double-hung single-pane with stone hood mold lintel and sill. The window to the right lines up with the steps and was originally a door. It was converted to a single-hung single-pane window, probably in the 1940s. Above the covered porch lies an eyebrow dormer with three angular glass panes. The cross-gabled section contains a first story window placed to the extreme east (right) of the wall. A sandstone hood mold lintel and sill surround this window. On the second story is a set of paired windows with a sandstone sill. The window is bisected horizontally by wood trim, which divides the gable face from the brick wall below. Decorative fishscale shingles fill the gable face and a decorative stick truss at the peak caps the area. There are two more 1/1 double-hung single-pane windows with sandstone hood mold lintels and sills on the first story; one faces east from the cross-gabled projection and the other is on the east end of the south wall. The house is a contributing resource.

BARN (1901-1904)

The barn is a 2½ -story balloon framed building with a sandstone foundation that has nearly 2000 square feet of space. Corrugated metal covers the gambrel roof and shed additions on either side. Gable returns are seen on the north and south sides and a gabled cupola is centered on the ridgeline of the roof. Board and batten siding covers the barn. The painted north side (front) has a double door entrance with a small window and a large single door to the west (right). A single-pane fixed window with wood trim is just west of the double doors. The uppermost portion of the window borders the central large opening of the second story- a sliding single door with cast iron wheels and pulleys on the interior. The west side has a large open shed roof section that protects a large single barn door leading into the main level corral. Slightly overhanging eaves shelter exposed rafters. Flanking the central entry are small single-pane fixed windows. On the south a large single door leads to the corral inside. A small rectangular divided light window towards the east end provides light to the chicken coop inside. The second story contains a large sliding door exactly like door on the north side. The eastern shed roof section is enclosed with the same board and batten siding as on the rest of the building. Three single-pane fixed windows exist on the east wall. Double doors on the south wall of this section are almost completely detached while the north side has no doors.

The interior main level of the barn has two 12'x36' open storage areas while the floor has a corral with feed bins, a chicken coop, and storage. The second story has an open floor plan that was originally

**National Register of Historic Places
Continuation Sheet****United States Department of the Interior
National Park Service**Mathews House
Delta County/ ColoradoSection number 7 Page 4

used to store hay. The floor of the second story has several trap doors used to drop hay to the animals below. The barn is a contributing resource.

Image circa 1900-1930

Photo courtesy of the Colorado Historical Society, Accession number: 96.69.32, via Denver Public Library, Western History Photos website, # CHS.X5156.

**National Register of Historic Places
Continuation Sheet****United States Department of the Interior
National Park Service**Mathews House
Delta County/ ColoradoSection number 7 Page 5

CARETAKER'S COTTAGE (1904)

To the northeast of the barn is the small caretaker's cottage, now known as the servant's/gardener's quarters. This small house is 12'x 12' with a sandstone foundation, horizontal wood siding, cornerboards, and a corrugated metal front-gabled roof with gable returns. The west facade has a four-paneled wood door with a fixed divided-light window to the north (left). Towards the peak of the roof is a diamond shaped window. The south side has a single fixed window placed towards the west side of the wall. The east and north sides are just walls with no windows or ornamentation. The windows on this building are replacements of earlier four-light windows. The caretaker's cottage is a contributing resource.

SHOP (1901-1904)

Directly north of the caretaker's cottage is the shop, now called the shop/garage. It was originally used to store farm equipment. The 14'x 31' building is covered with an asymmetrical wood shingled side gabled roof. Tucked under the north portion of the roof is the workshop, which consists of a horizontal wood sided building with four walls and four-panel wood door. The south portion contains two open parking stalls with a single support post in the middle. Vertical or board and batten siding is barely visible on the south wall. A four-light window is positioned on the north wall. It is unknown if any changes have been made to this building as it has been in the current form since at least the 1940s. The shop is a contributing resource.

OUTHOUSE (1897-1901)

Located southwest of the barn is the outhouse. The one-story square plan building has a side gabled roof covered with wood shingles, horizontal wood siding, cornerboards, and exposed rafters. A vent is located towards the gable peak on the north wall. The outhouse is a two-seater and a contributing resource.

HOBBY ROOM (1999)

The hobby room is north of the shop. Built in 1999, this one-story building has an asymmetrical side gabled corrugated metal roof. The west facade has a four-paneled door in the center with 1/1 modern single-hung windows on either side of the door. Walls are covered with a composite fiberboard siding placed horizontally. The building is a non-contributing resource.

**National Register of Historic Places
Continuation Sheet**

**United States Department of the Interior
National Park Service**

Mathews House
Delta County/ Colorado

Section number 7 Page 6

Historic Image, circa 1900



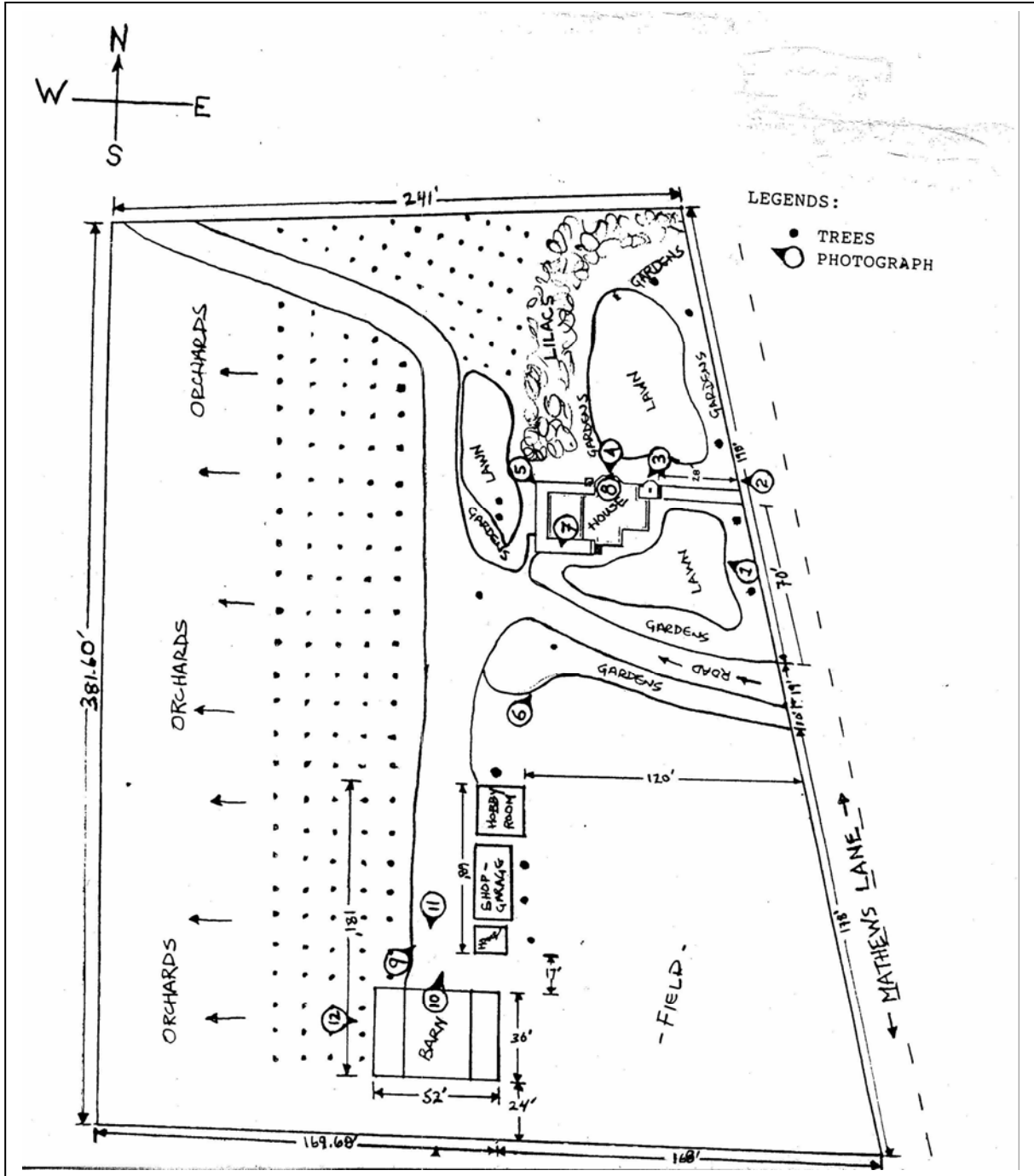
National Register of Historic Places Continuation Sheet

United States Department of the Interior
National Park Service

Mathews House
Delta County/ Colorado

Section number 7 Page 7

Site Plan



**National Register of Historic Places
Continuation Sheet****United States Department of the Interior
National Park Service**Mathews House
Delta County/ ColoradoSection number 8 Page 8**SIGNIFICANCE**

The 1901 Mathews House is eligible for listing in the National Register under Criterion C as an excellent example of the Queen Anne style. The house possesses the distinctive characteristics of the style, including the use of brick with stone accents, a wrap-around porch with turned supports, steeply pitched cross-gables, decorative shingles, belt courses, decorative porch brackets, and vergeboard. The Mathews House is one of only a few Queen Anne residences with such detailing in Paonia that still remains after 100 years. It is also one of the most intact examples of this style in the area. While there has been one notable change in the addition of a picture window to the façade in 1944, the stone lintels and sills from the original two windows were incorporated into it, making the newer window less apparent. The house does retain integrity of materials, workmanship, and design as well as setting and location, still surrounded by the orchards from Paonia's early days. Elements found on the house, though typical of this ornamental style, are unusual for small western slope towns. The craftsmanship shows through in such elements as: the porthole windows with stone trim, carved rope detail on some of the stone sills, an eyebrow dormer with three curved panes of glass, finials and pendants at the gable peaks, turreted front porch, and an extensive wrap-around porch, both with decorative cut-out brackets and turned and chamfered posts.

Popular in Colorado between 1880-1910, Queen Anne is perhaps the most varied and decorative style of the Victorian period. Queen Anne's asymmetrical compositions consist of a variety of forms, textures, materials, and colors that are manipulated into an impressive visual display. *The Guide to Colorado's Historic Architecture and Engineering* notes that "the style varies from the highly decorative to a more restrained version found in many residential neighborhoods." Paonia and other western slope towns are no exception. Several methods are used to avoid a smooth walled appearance. One is to employ building materials of different composition and textures, a hallmark of Queen Anne homes. Another is to employ devices such as wall projections, bays and overhangs. Gabled roofs that overhang bay windows shaped into the wall below are seen in many of all Queen Anne homes. Wrap-around porches accentuate the asymmetrical compositions. Door and window surrounds tend to be simple in Queen Anne homes, however, some are known to be more decorative. Windows are usually double-hung with single-pane glass. Gables are decorated with patterned shingles or elaborate motifs. The Mathews House possesses all of these characteristics and shows careful attention to detail. Paonia does have other Queen Anne brick homes that survive, but the Mathews House is distinctive because of its architectural detailing and the fact that it is relatively unaltered. It is one of the largest, most ornate, and, without question, most photographed houses in Paonia. The entire property is currently in need of major repair, and efforts are being made to restore the property to its original grandeur.

HISTORICAL BACKGROUND

Founded in 1881 by Samuel Wade, Paonia is named for the peony roots brought to Colorado in his covered wagon. At the time of Wade's arrival, the U.S. Government was in the process of removing the Ute Indians to the reservations. After looking over the area with Enos Hotchkiss (founder of the neighboring town of Hotchkiss), Wade decided to stay. He surveyed the area, brought in the first fruit trees, and dug irrigation ditches in preparation for settlement of the town. Fruit- cherries, apples, peaches, and plums- quickly became the dominant agricultural product of the region. With Paonia fruit taking six first place awards at the 1893 Columbian Exposition/World's Fair and the arrival of the Denver & Rio Grande Western Railroad- North Fork Line in 1902, the town's population boomed. Cattle ranching and mining were also important industries for Paonia, in addition to the flourishing fruit orchards. The open land, flowing rivers, and vast forested meadows enticed cattlemen to Delta County

**National Register of Historic Places
Continuation Sheet****United States Department of the Interior
National Park Service**Mathews House
Delta County/ ColoradoSection number 8 Page 9

almost immediately after settlement. An increase in the demand for beef caused the cattle ranchers to be the dominant force in the region for many years. Shepherders introduced sheep to the region, with strong opposition by the cattle ranchers. Nevertheless, by 1915, sheep herding surpassed cattle in profitability and became the animal of choice for the area. Mining also became a major industry due to the vast supply of coal. The railroad made transportation of this valuable resource an important part of the local economy, especially after the Great Freeze of 1912 destroyed many a farmer's fruit orchard. Only the hardest and most determined farmers remained to keep the fruit industry going. The fruit industry, however, has continued to be the mainstay for Paonia, despite weather and insect problems, following the boom and bust cycle that has constantly plagued Colorado cities and towns.

The Mathews House was begun in 1897 with the brick for the home being fired on the property. The home was one of the first five brick homes to be built in Paonia, on the western slope in Colorado. Edward James Mathews was born on March 1, 1861 in Lockport, New York, to Harvey and Mary (Van Waggoner) Mathews. Harvey ran a successful mercantile company, as had his father before him, expanding to include lumber interests. Hoping to further spread their business to the west, young Edward came to Colorado in the spring of 1880 at the age of 19, settling first in Lake City. In September 1881, after the removal of the Ute Indians from the Uncompahgre Valley, he and his wife were among the first settlers in Montrose, Colorado. Mathews, with partner Nate Goodwin, built the Mathews Building, which still stands across from the First National Bank in Montrose. Here they operated a successful grocery and mercantile company, the first in Montrose.

In December 1894, Mathews purchased the Wade property from the Paonia town founder, Samuel E. Wade. The property ran from Main Street down one half mile on the south side of the river and was planted heavily with fruit trees. Mathews, with his wife Anna and family, moved to Paonia from Montrose in 1895. He built two buildings on Grand Avenue in Paonia, where he operated a mercantile and lumber business. From the Grand Junction, Colorado, *Sentinel* on January 22, 1907, it was noted that Mathews purchased a large area of land to build a canning plant at a cost of \$75,000 so that the fruit coming from the North Fork Valley could be processed on a large scale. Mathews had vast cattle interests in Colorado, raising thoroughbred Hereford cattle. His Brand 'X' was issued prior to 1900. He donated a large area of land for a city park in the spring of 1906, where a pavilion was built and used for games and dancing along with a ball field and a ten-foot fountain. Mathews was elected mayor of Paonia in 1908, and through his efforts, money was secured to build the new electric light plant. In addition, he also donated land for the 'pest house', was used for treatment of those with contagious diseases. Through his efforts, concrete sidewalks replaced the boardwalks in Paonia. He was president and manager of the canning factory in Paonia.

His elegant house became a place for the townspeople to meet. The home's three lovely parlors were often used for entertaining and local musicals. As many as 65 guests were present for the different events. During these years, Anna was a delightful hostess as well as a civic leader. She hosted most of the local club meetings as well as school board meetings, of which she was president. The Uncompahgre Businessmen Association of Delta and Montrose Counties were entertained here too.

Through Mathews' efforts, the water system was much improved and was instrumental in helping bring the railroad to Paonia, culminating in the construction of the present North Fork Line. He was chairman for the County Central Committee for the Republican Party and though he was not interested in pursuing a political career for himself, he was actively interested in promoting those individuals he felt would best serve the Republican Party. Mathews was very influential in securing the election of Senator

**National Register of Historic Places
Continuation Sheet****United States Department of the Interior
National Park Service**Mathews House
Delta County/ ColoradoSection number 8 Page 10

George Stephen of Colorado and maintained that friendly relationship throughout his lifetime. Mathews also had interest in, and helped to develop a coal mine called the Farmers Mine in Paonia. In 1914, the Mathews moved to Delta and then Cory, Colorado, where he was closer to his extensive cattle interests in Escalante Canyon. The Mathews property was sold to his sister and her husband William Stark in March 1913. William Stark died in 1933. His widow retained the property until November 1934 when she sold the estate to another of the Mathews brother, Vincent. Vincent Mathews died in 1941 and Paul W. Berg bought the house in March 1943. It passed to Paul Berg's three daughters: Betty (Andrew & Paul Thliveris' mother), Pauline, and Alice. Betty gave her portion to her son Andrew, and then he bought each of his aunts' portions to become sole owner in November 2003, allowing the property to remain in the family.

National Register of Historic Places Continuation Sheet

United States Department of the Interior
National Park Service

Mathews House
Delta County/ Colorado

Section number 9 Page 11

BIBLIOGRAPHY

Doherty, Deborah V. *Delta, Colorado, the first hundred years, A Centennial History*. Delta, CO: Delta County Independent, 1982.

Hartline, Cindy. National Register Nomination: *Curtis Hardware Store*, 5DT.528. Office of Archaeology and Historic Preservation, May 1, 1989.

Loftis, Linda with Holly Wilson. National Register Nomination: *Garnethurst*, 5DT.988. Office of Archaeology and Historic Preservation, May 25, 1995.

McAlester, Virginia and Lee. *A Field Guide to American Houses*. New York: Alfred A. Knopf, 1984.

Mullikin, Donna. *100 years in Montrose, Colorado 1882-1982*. Montrose, CO: Freeman, 1982.

Office of Archaeology and Historic Preservation. *A Guide to Colorado's Historic Architecture and Engineering, Second Edition*. Office publication, March 2003.

The Readable History of Paonia. Paonia Chamber of Commerce website:
www.paoniachamber.com/history

Newspapers

Delta Independent	2 March 1916
Paonian	6 September 1905
	17 April 1906
	27 July 1906
	10 August 1906
	6 November 1906
	9 November 1906
	22 March 1907
	27 September 1907
	29 September 1907
	17 January 1908
	17 March 1908
	22 May 1908
	29 May 1908
	17 July 1908
	28 August 1908
	4 September 1908
	14 September 1909
	9 February 1912
	7 March 1912
	24 October 1912
	20 February 1930
	27 February 1930
Paonia Booster	27 March 1908
	17 September 1909
	29 April 1910
	4 April 1912

**National Register of Historic Places
Continuation Sheet****United States Department of the Interior
National Park Service**Mathews House
Delta County/ ColoradoSection number 10 Page 12

GEOGRAPHICAL DATA**VERBAL BOUNDARY DESCRIPTION**

Beginning at the northeast corner of J-75 Road (Mathews Lane) and Niagara Street, thence southwest 400', thence northwest 337.68', thence northeast 381.60', thence east 241' to point of beginning.

BOUNDARY JUSTIFICATION

The nominated parcel includes all of the land and buildings under single ownership.

**National Register of Historic Places
Continuation Sheet****United States Department of the Interior
National Park Service**Mathews House
Delta County/ ColoradoSection number ___ Page 13**PHOTOGRAPH LOG**

The following information pertains to photograph numbers 1-13 except as noted:

Name of Property: Mathews House
Location: Delta County, Colorado
Photographer: Paul Thliveris
Date of Photographs: May 2004
Negatives: With photographer

Photo No. Photographic Information

- 1 Southeast corner of house, camera facing northwest.
- 2 East elevation, camera facing west.
- 3 Northeast corner of house, camera facing southwest.
- 4 North elevation, camera facing south.
- 5 Northwest corner of house, camera facing southeast.
- 6 Southwest corner of house, camera facing northeast.
- 7 Interior- upstairs bathroom.
- 8 Interior- upstairs bedroom.
- 9 Outbuildings southwest of house, camera facing northeast.
- 10 View from barn towards house.
- 11 North elevation of barn, camera facing south.
- 12 West elevation of barn, camera facing east.
- 13 South elevation of barn, camera facing north.

National Register of Historic Places Continuation Sheet

United States Department of the Interior
National Park Service

Mathews House
Delta County/ Colorado

Section number ___ Page 14

USGS TOPOGRAPHIC MAP
Paonia Quadrangle, Colorado
7.5 Minute Series

UTM: Zone 13 / 274301E / 4304797N
PLSS: 6th PM, T14S, R91W, Sec.6
SE¼ SE¼ SE¼ NW¼
Elevation: 5645 feet

